

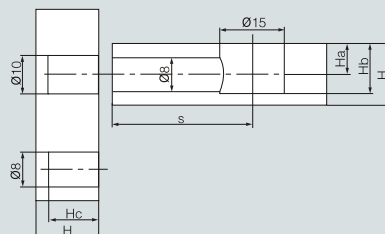
**SH-9111-A1-B1-C1**



三合一 three-in-one



二合一 two-in-one



三件套代号 Code of 3-piece kit	SH-9111-A1	SH-9111-A1-02	SH-9111-B1	SH-9111-C1	SH-9111-C1-02
孔距S Hole spacing(S)	33.5	32	28.5	25	24
总长L Total length(L)	41	40	36	33	

板厚H Board thickness (H)	孔中心高Ha Hole center height (Ha)	孔深Hb Hole depth (Hb)	孔深Hc Hole depth (Hc)
15	7.5	12 <sup>+0.5</sup>	12 <sup>+0.5</sup>
18	9	13.5 <sup>+0.5</sup>	12 <sup>+0.5</sup>
20	10	14.5 <sup>+0.5</sup>	12 <sup>+0.5</sup>

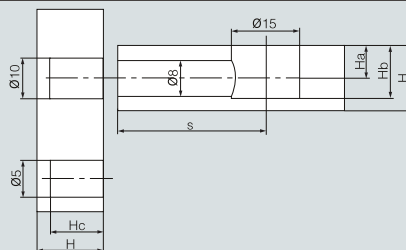
**SH-9111-A2-B2-C2**



三合一 three-in-one



二合一 two-in-one



三件套代号 Code of 3-piece kit	SH-9111-A2	SH-9111-A2-02	SH-9111-B2	SH-9111-C2
孔距S Hole spacing(S)	33.5	32	28.5	25
总长L Total length(L)	41	40	36	33

板厚H Board thickness (H)	孔中心高Ha Hole center height (Ha)	孔深Hb Hole depth (Hb)	孔深Hc Hole depth (Hc)
15	7.5	12 <sup>+0.5</sup>	12 <sup>+0.5</sup>
18	9	13.5 <sup>+0.5</sup>	12 <sup>+0.5</sup>
20	10	14.5 <sup>+0.5</sup>	12 <sup>+0.5</sup>

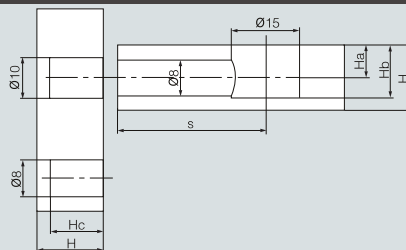
**SH-9111-A3-B3-C3**



三合一 three-in-one



二合一 two-in-one



三件套代号 Code of 3-piece kit	SH-9111-A3	SH-9111-A3-02	SH-9111-B3	SH-9111-C3	SH-9111-C3-02
孔距S Hole spacing(S)	33.5	32	28.5	25	24
总长L Total length(L)	41	40	36	33	

板厚H Board thickness (H)	孔中心高Ha Hole center height (Ha)	孔深Hb Hole depth (Hb)	孔深Hc Hole depth (Hc)
15	7.5	12 <sup>+0.5</sup>	12 <sup>+0.5</sup>
18	9	13.5 <sup>+0.5</sup>	12 <sup>+0.5</sup>
20	10	14.5 <sup>+0.5</sup>	12 <sup>+0.5</sup>

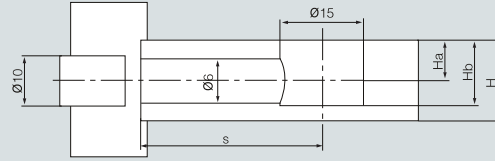
**SH-9111-A4**



SH-9111-A4-1  
三合一 three-in-one (Ø5.2x38mm)



SH-9111-A4-2  
二合一 two-in-one



三件套代号 Code of 3-piece kit	SH-9111-A4	SH-9111-A4-02	SH-9111-B4	SH-9111-C4
孔距S Hole spacing(S)	33.5	32	28.5	25
总长L Total length(L)	41	40	36	33

板厚H Board thickness (H)	孔中心高Ha Hole center height (Ha)	孔深Hb Hole depth (Hb)	孔深Hc Hole depth (Hc)
15	7.5	12 <sup>+0.5</sup>	12 <sup>+0.5</sup>
18	9	13.5 <sup>+0.5</sup>	12 <sup>+0.5</sup>
20	10	14.5 <sup>+0.5</sup>	12 <sup>+0.5</sup>

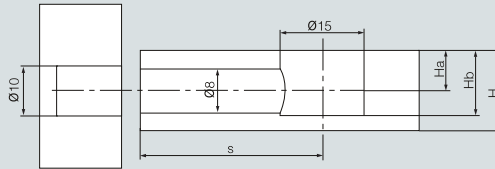
**SH-9111-A5**



SH-9111-A5-1  
三合一 three-in-one  
(Ø5.2x32mm 滚花杆 knurledrod)



SH-9111-A5-2  
三合一 three-in-one  
(Ø4mm 自攻杆 Self-tapping rod)



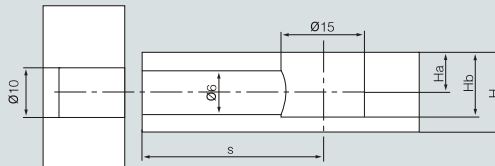
三件套代号 Code of 3-piece kit	SH-9111-A5	SH-9111-A5-02	SH-9111-B5	SH-9111-C5
孔距S Hole spacing(S)	33.5	32	28.5	25
总长L Total length(L)	41	40	36	33

板厚H Board thickness (H)	孔中心高Ha Hole center height (Ha)	孔深Hb Hole depth (Hb)	孔深Hc Hole depth (Hc)
15	7.5	12 <sup>+0.5</sup>	12 <sup>+0.5</sup>
18	9	13.5 <sup>+0.5</sup>	12 <sup>+0.5</sup>
20	10	14.5 <sup>+0.5</sup>	12 <sup>+0.5</sup>

**SH-9111-A6**



快装二合一 Ready-packet two-in-one



三件套代号 Code of 3-piece kit	SH-9111-A6	SH-9111-A6-02	SH-9111-B6	SH-9111-C6
孔距S Hole spacing(S)	33.5	32	28.5	25
总长L Total length(L)	41	40	36	33

板厚H Board thickness (H)	孔中心高Ha Hole center height (Ha)	孔深Hb Hole depth (Hb)	孔深Hc Hole depth (Hc)
15	7.5	12 <sup>+0.5</sup>	12 <sup>+0.5</sup>
18	9	13.5 <sup>+0.5</sup>	12 <sup>+0.5</sup>
20	10	14.5 <sup>+0.5</sup>	12 <sup>+0.5</sup>

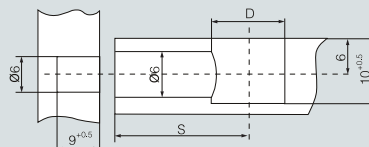
SH-9112



Ø12二合一有边 Ø12 Two-in-one with edge



Ø12二合一无边 Ø12 Two-in-one brimless



三件套代号 Code of 3-piece kit	Ø12三件套 Ø12(3-piece kit)	Ø10 三件套 Ø10(3-piece kit)
孔距S Hole spacing (S)	20	18
孔径D Hole diameter (D)	12	10

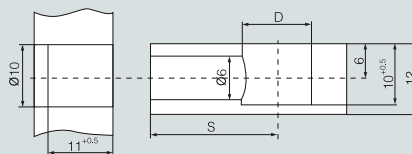
SH-9112



Ø10三合一有边 Ø10 Three-in-one with edge



Ø10三合一无边 Ø10 Three-in-one brimless



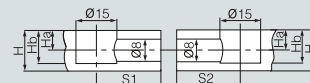
三件套代号 Code of 3-piece kit	Ø12三件套 Ø12(3-piece kit)	Ø10 三件套 Ø10(3-piece kit)
孔距S Hole spacing(S)	18	16
孔径D Hole diameter (D)	12	10

SH-6111 双头拉杆 Double-end pull rod



孔距S1+S2为47、63、64、67、73、84、87等  
Hole spacing S1+S2:47,63,64,67,73,84,87,etc.

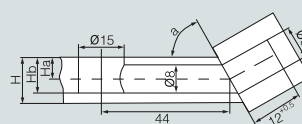
板厚H Board thickness (H)	孔中心高Ha Hole center height(Ha)	孔深Hb Hole depth(Hb)
15	7.5	12 <sup>+0.5</sup>
18	9	13,5 <sup>+0.5</sup>
20	10	14,5 <sup>+0.5</sup>



SH-6112 单头角度连接件 Single-end angle connecting piece



板厚H Board thickness (H)	孔中心高Ha Hole center height(Ha)	孔深Hb Hole depth(Hb)
15	7.5	12 <sup>+0.5</sup>
18	9	13,5 <sup>+0.5</sup>
20	10	14,5 <sup>+0.5</sup>

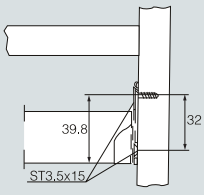
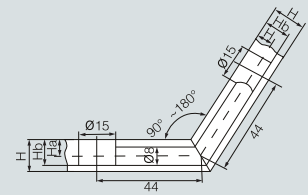


注：偏心轮可配镀镍、青古铜、红古铜等。 Note: Eccentric wheel can be plated with nickel.

**SH-6113 双头角度连接件 Double-end angle connecting piece**



板厚H Board thickness (H)	孔中心高Ha Hole center height(Ha)	孔深Hb Hole depth(Hb)
15	7.5	12 <sup>+0.5</sup>
18	9	13.5 <sup>+0.5</sup>
20	10	14.5 <sup>+0.5</sup>



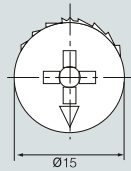
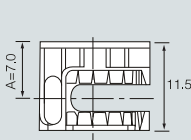
SH-6116  
塑料连接件 Plastic connecting piece



SH-6114  
偏心杆 Eccentric rod M7x53



SH-6115  
衣通托-1 Hanging tube bracket-1



Ø15半角轮-1  
Ø15 semi-angle wheel-1



Ø15半角轮-2  
Ø15 semi-angle wheel-2



Ø15全角轮-1(4.5克)  
Ø15 full-angle wheel-1 (4.5g)



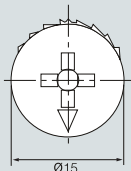
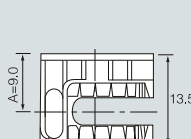
Ø15全角轮-2(4.3克)  
Ø15 full-angle wheel-2(4.3g)



Ø15全角轮-3(4克)  
Ø15 full-angle wheel-3(4g)



Ø15全角轮-4(带边)  
Ø15 full-angle wheel-4(with edge)



Ø15-18H全角轮-1  
Ø15-18H full-angle wheel-1



Ø15-18H全角轮-1(带边)  
Ø15-18H full-angle wheel-1 (with edge)



Ø15-18H轮-2  
Ø15-18H wheel-2



Ø15-18H轮-2(带边)  
Ø15-18H wheel-2 (with edge)



SH-9112-C01  
仿金 Gold-imitating



SH-9112-C02  
红古铜 Dark copper

